



# Heatwave series

Model name

Blank box for model name



## Specification

Dimensions	2180x2180x920mm
Water Volume	1490 Litres
Dry Weight	363kg
Power Required	32 Amps
Loungers	0
Seats	7
Insulation	R18 Full Foam
Side Skirt Insulation	Aluminium Wrap 15mm Foam
Shell	6-Layer Lucite Acrylic
Thermal Cover	Included

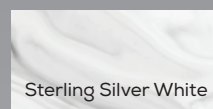
## Performance

Control System	Gecko in.K1001
Heater Pack	Gecko in.YE3 3kW
Jet Pumps	2x 3hp
Hot Air Pump	1x 400w
Circulation Pump	1x 0.35hp
Hydro Jets	48
Air Jets	14
Filtration	Twin PureBlue Filters
Ozonator	Yes

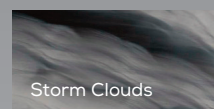
## Entertainment

Bluetooth Audio	Gecko in.Stream 2
Speakers	2x Transducer 1x Subwoofer
WiFi	Optional
Lighting	Waterline LEDs Big Underwater LED LED Corner Panels
Water Features	3x Roman Fountains Integrated Ice Bucket

## Available colours



Sterling Silver White



Storm Clouds

## Hot Air Massage System

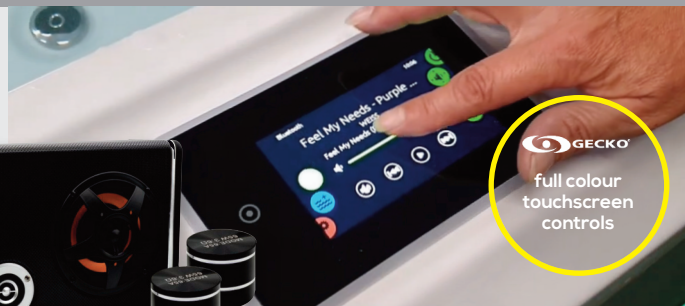
The Oasis Spas Heatwave range features our new 400w preheated hot air jet system with an added array of soothing air massage jets.

## Award-winning R18 insulation

Oasis Spas are the only tubs to feature the award-winning R18plus full-foam insulation system, which locks heat into the tub and prevents it escaping to the atmosphere.

## Gecko in.stream bluetooth audio with premium transducer speakers & subwoofer

Unlike traditional speakers that produce sound waves that travel through the air to reach our ears, our transducer speakers are designed to transmit sound waves directly through the water. This means that you won't just hear your music, but you'll actually feel it too!



full colour touchscreen controls



LED Corner Panels



Full Foam Insulation



Optional WiFi



Ozone Mixing Chamber

